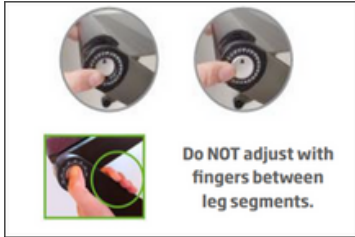


# Standing Desk Basics

To adjust each leg, press the silver button at the joint.



The joint is locked when the button clicks into place.

Max load is 13lbs. Only use when all joints are locked.

# Set-Up Options

Each joint has settings numbered 0-22



## Option 1

Joint A: 2

Joint B: 20

Joint C: 2

## Option 2

Joint A: 5

Joint B: 14

Joint C: 6